



10 Moxes Wood, Luton, Bedfordshire, LU3 3NB
£300,000

- FOUR GENEROUS BEDROOMS
- ON DRIVE PARKING
- FAMILY ROOM
- FREEHOLD

- NO UPPER CHAIN
- PRIVATE REAR GARDEN
- LARGE LIVING ROOM

- GARAGE IN BLOCK
- EXTENDED
- GUEST WC

*** P&R PROPERTY SALES *** FOUR GENEROUS BEDROOMS *** SEMI DETACHED *** NO UPPER CHAIN ** LARGE LIVING ROOM ** FAMILY ROOM ** GARAGE IN BLOCK **. This large property benefits from spacious accommodation including entrance hall, large living room, family room, kitchen, Guest WC, four generous bedrooms, family bathroom, gas central heating, double glazed window, front and back gardens, on drive parking and garage located in block.

GROUND FLOOR

ENTRANCE HALL

WC

KITCHEN 8'10" X 11'6" (2.69M X 3.51M)

LIVING ROOM 14'7" X 17'9" (4.45M X 5.41M)

FAMILY ROOM 10'11" X 11'6" (3.32M X 3.51M)

HALLWAY

BEDROOM 4 15'4" X 12'3" (4.68M X 3.73M)

FIRST FLOOR

LANDING

BEDROOM 1 13'7" X 9'5" (4.15M X 2.87M)

BEDROOM 2 10'6" X 11'8" (3.20M X 3.55M)

BEDROOM 3 7'7" X 8'4" (2.30M X 2.53M)

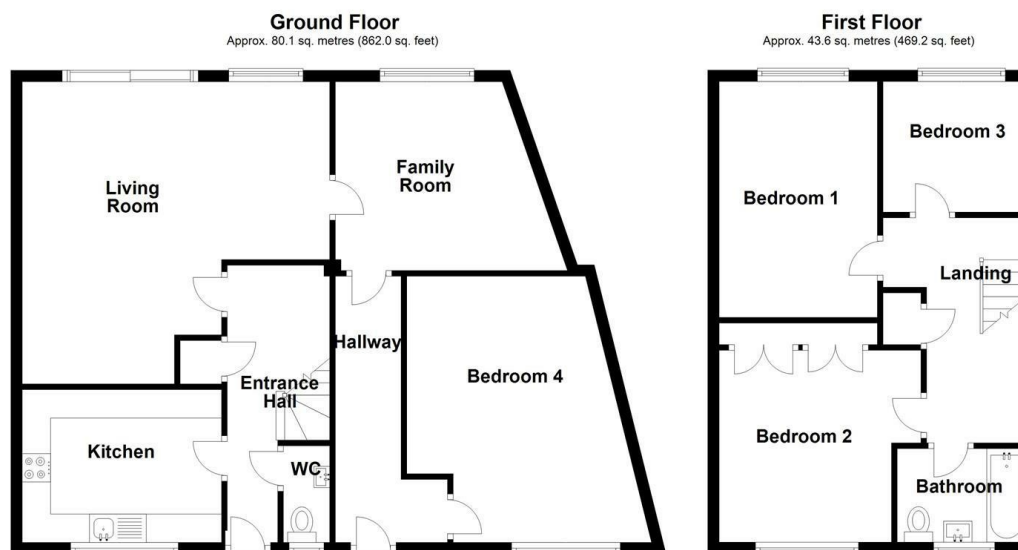
BATHROOM

OUTSIDE

FRONT & REAR GARDEN

GARAGE IN BLOCK

ON DRIVE PARKING



Total area: approx. 123.7 sq. metres (1331.1 sq. feet)

